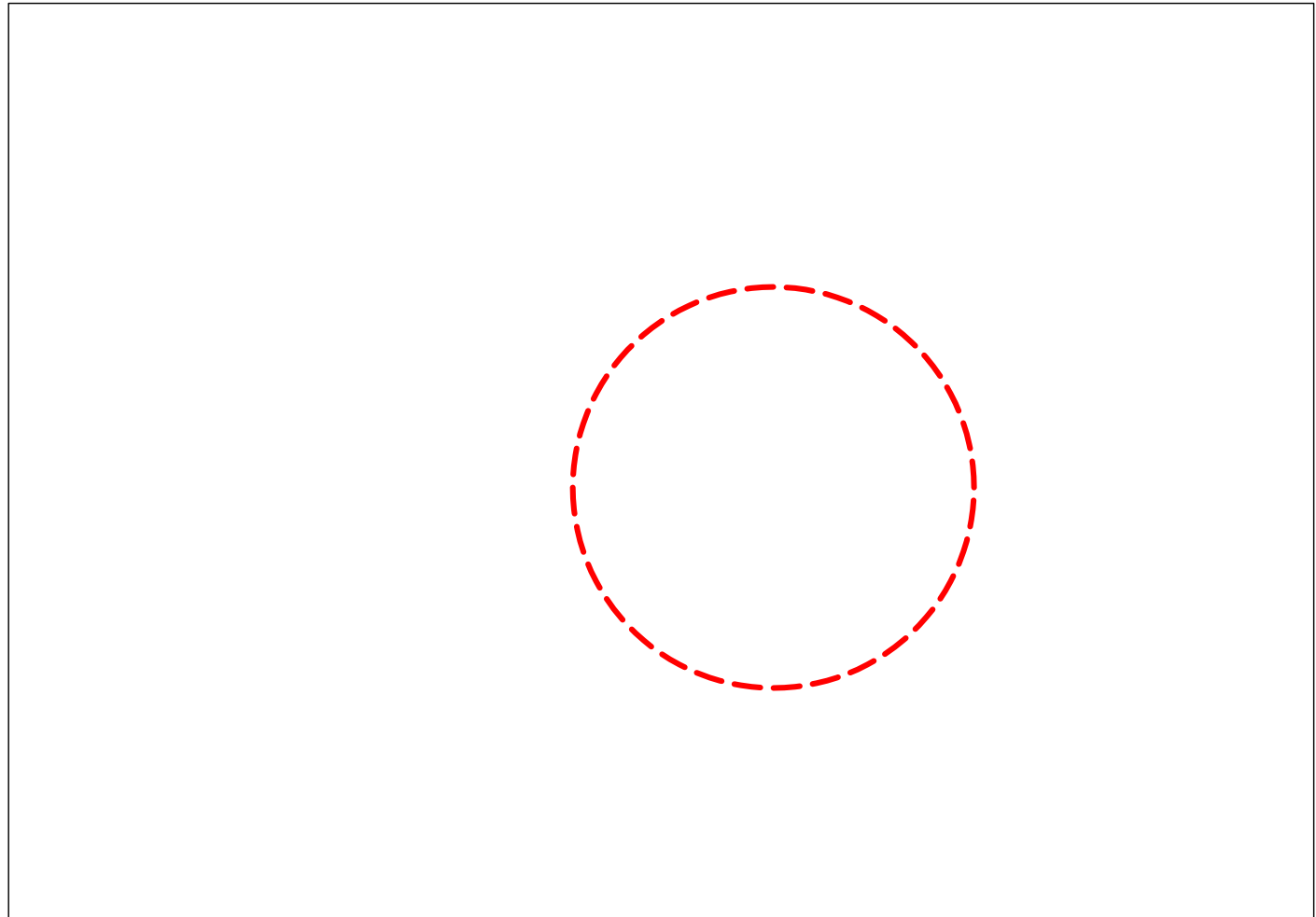


Estratto Tavola PI



Estratto di mappa - fg ..., mappale ...

PROVINCIA DI VERONA
COMUNE DI SAN ZENO DI MONTAGNA

PROGETTO PER L'AMPLIAMENTO DI UN FABBRICATO DI ABITAZIONE
SITO IN VIA MONTE BALDO n. E DI PROPRIETA' DEI SIGG.
- ai sensi delle L.R.Veneto n.
14/2009 e 32/2013 - PIANO CASA.

N

INTEGRAZIONE DOCUMENTI

Committente

Objetto

STATO DI PROGETTO - PIANTE, SEZIONI E PROSPETTI

Data

Scala

1:100

File dwg

File ctd

Revisione n°

Data

Revisione n°

Data

Revisione n°

Data

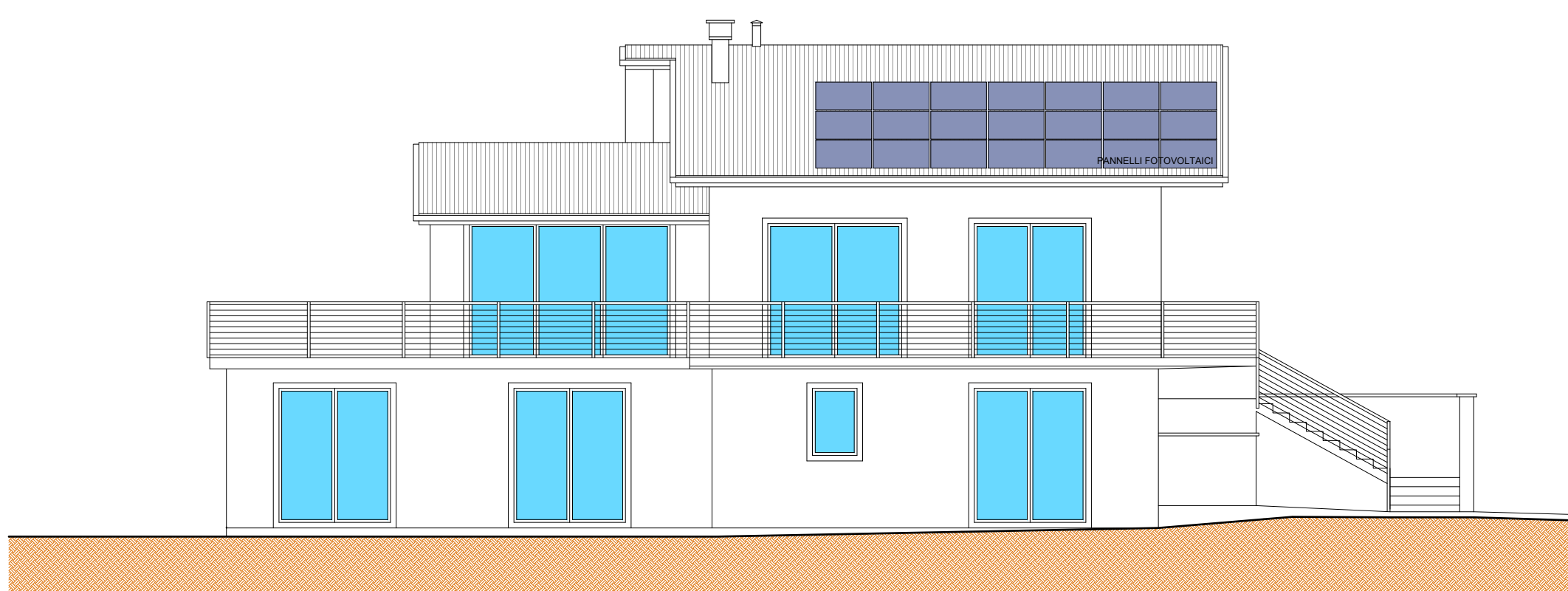
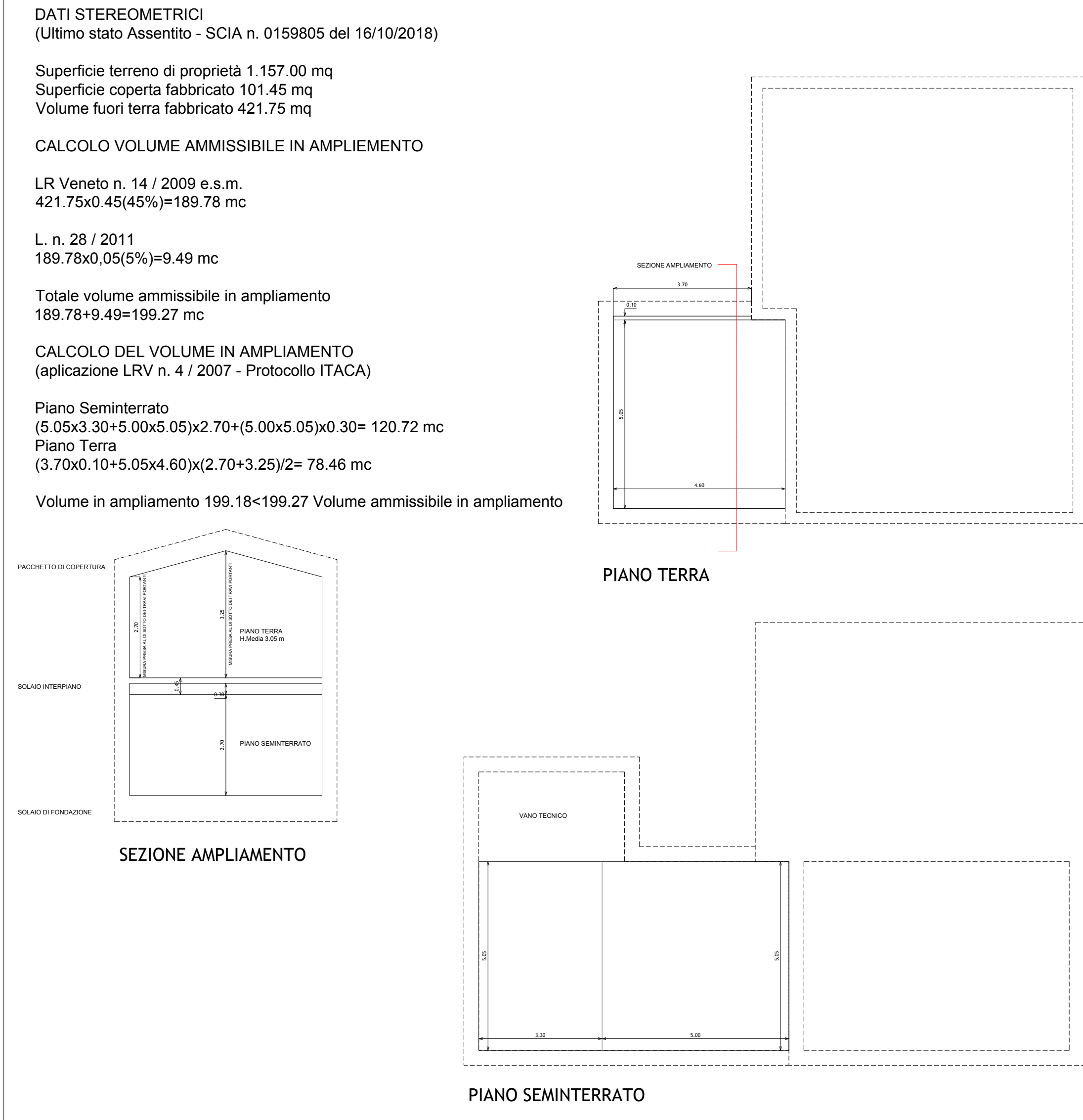
Progettista

Direttore dei lavori

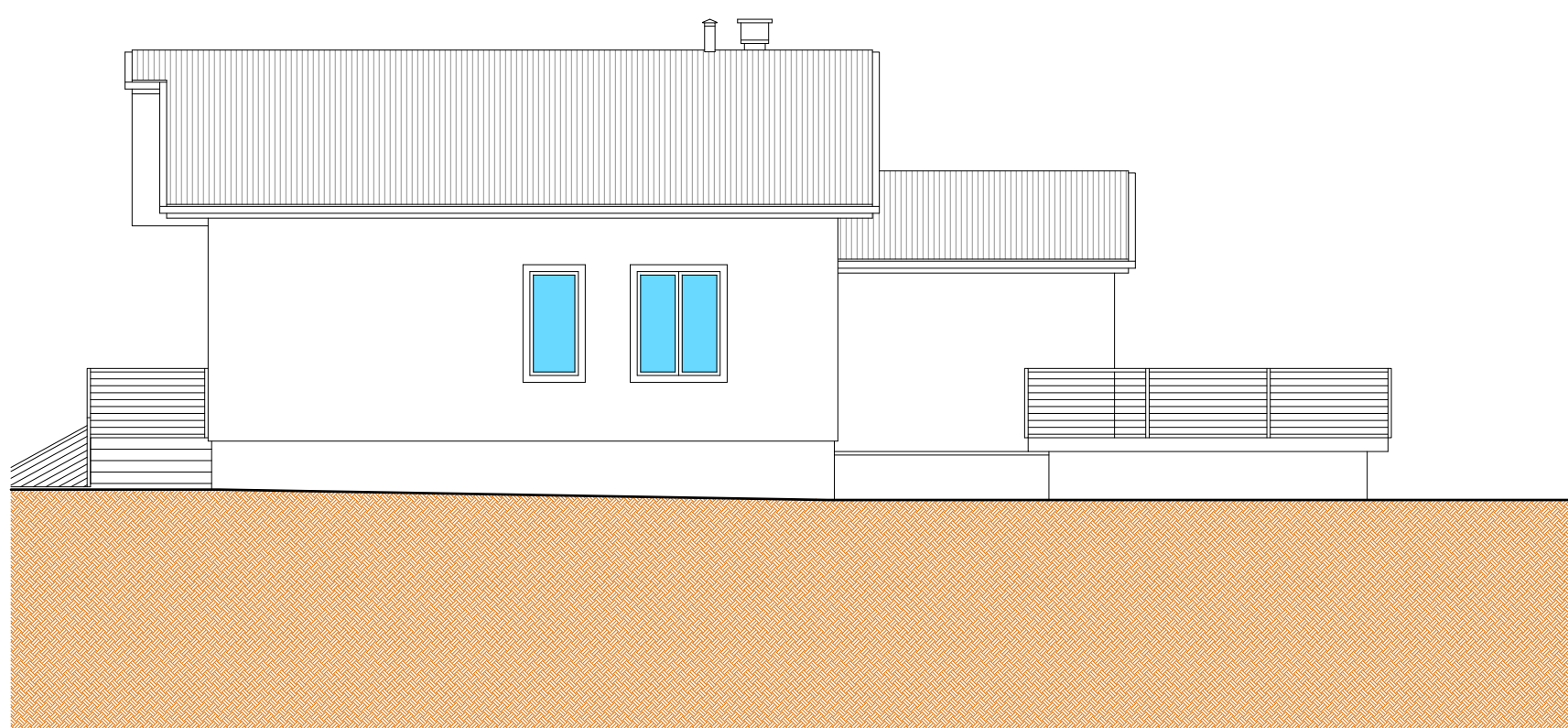
TAV.



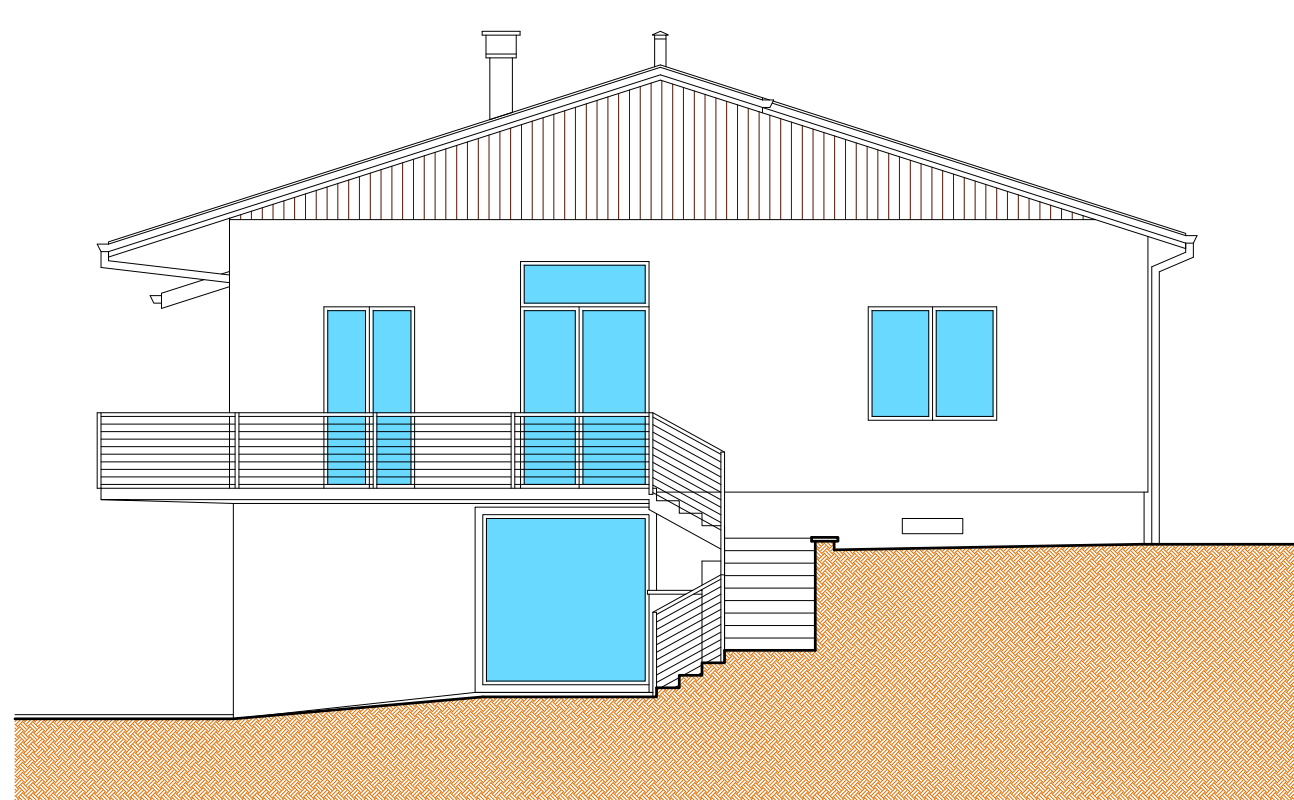
PLANIMETRIA GENERALE



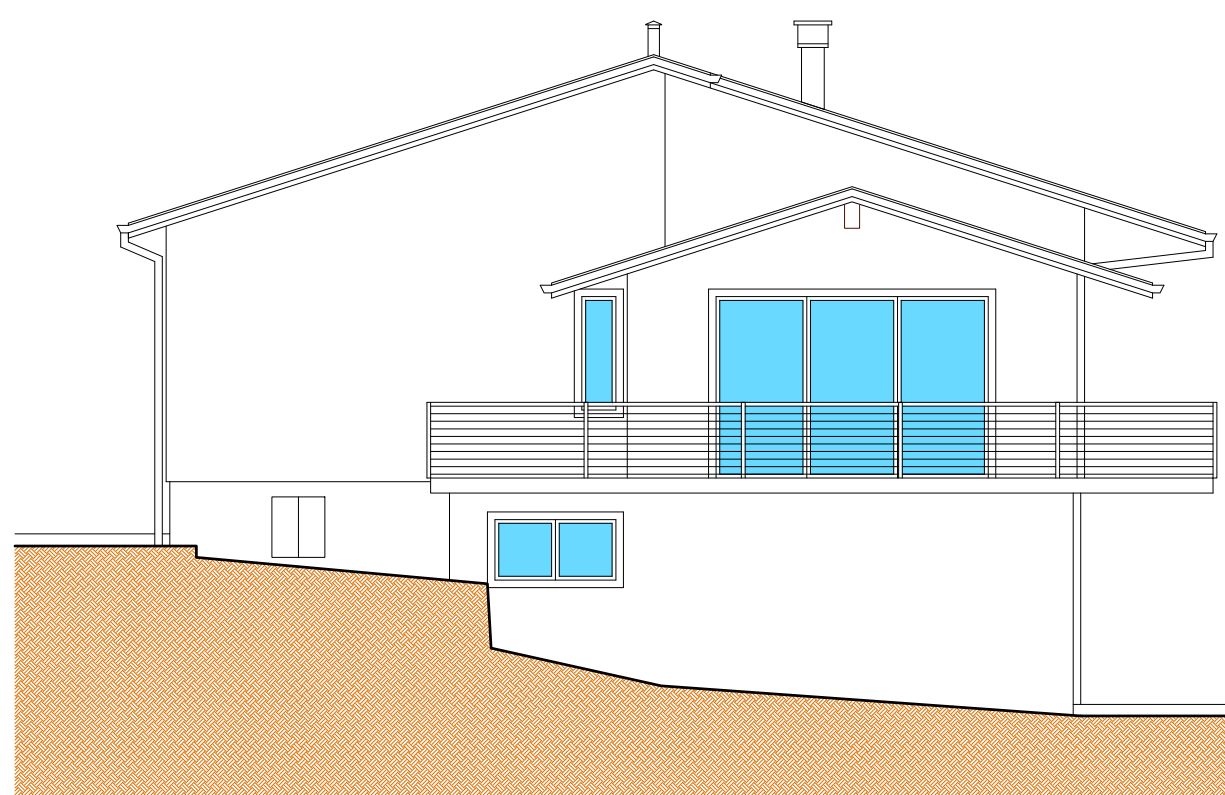
PROSPETTO OVEST



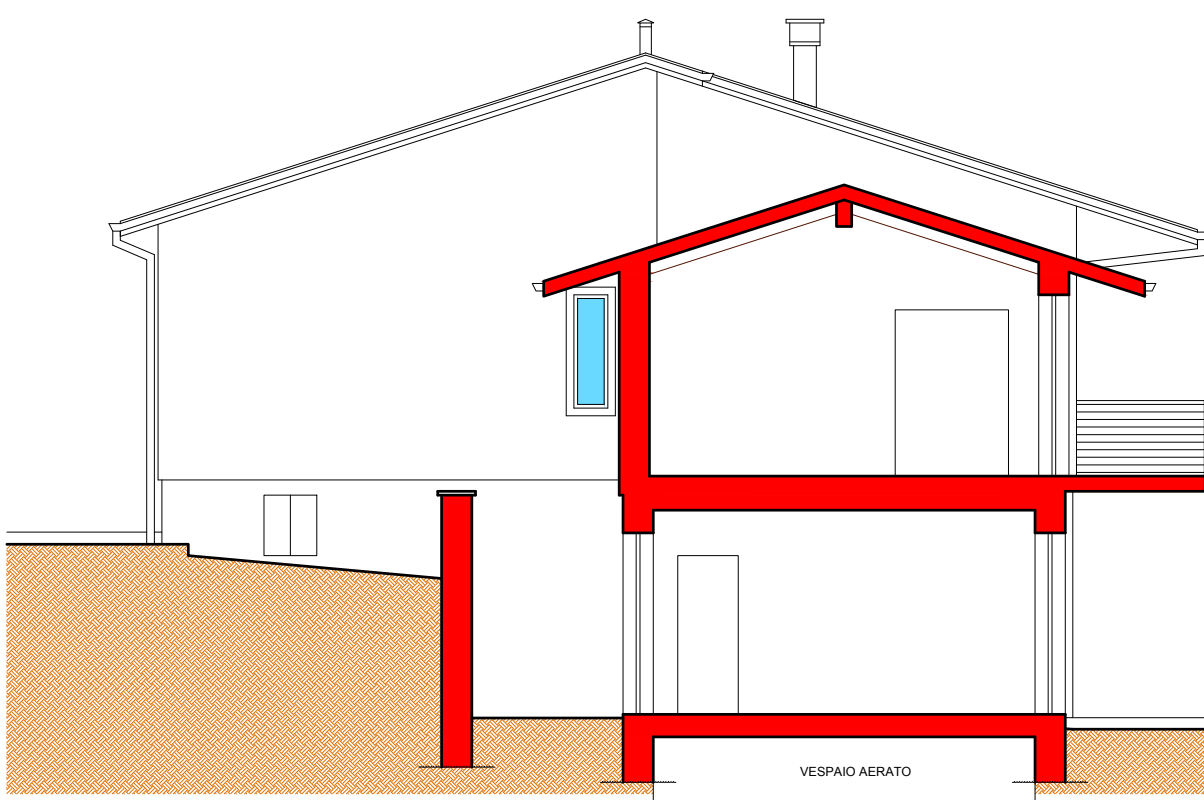
PROSPETTO EST



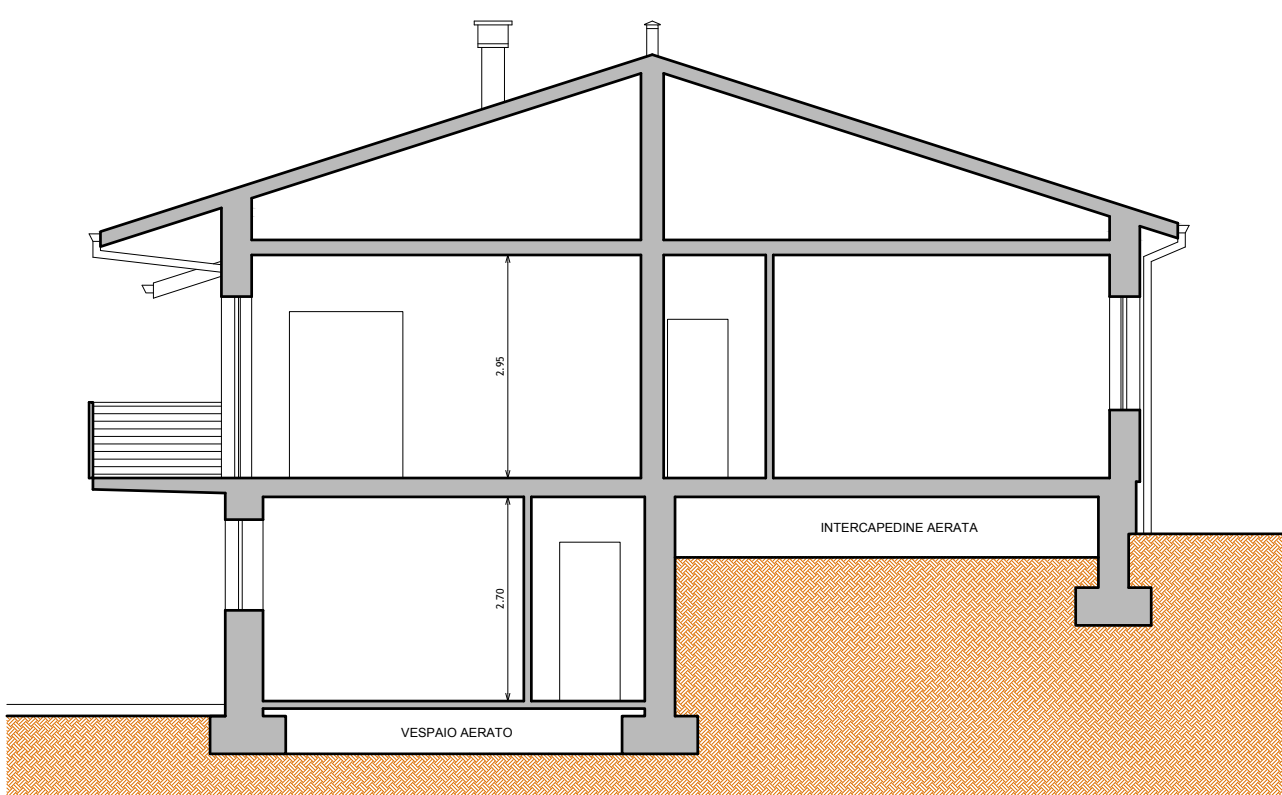
PROSPETTO SUD



PROSPETTO NORD

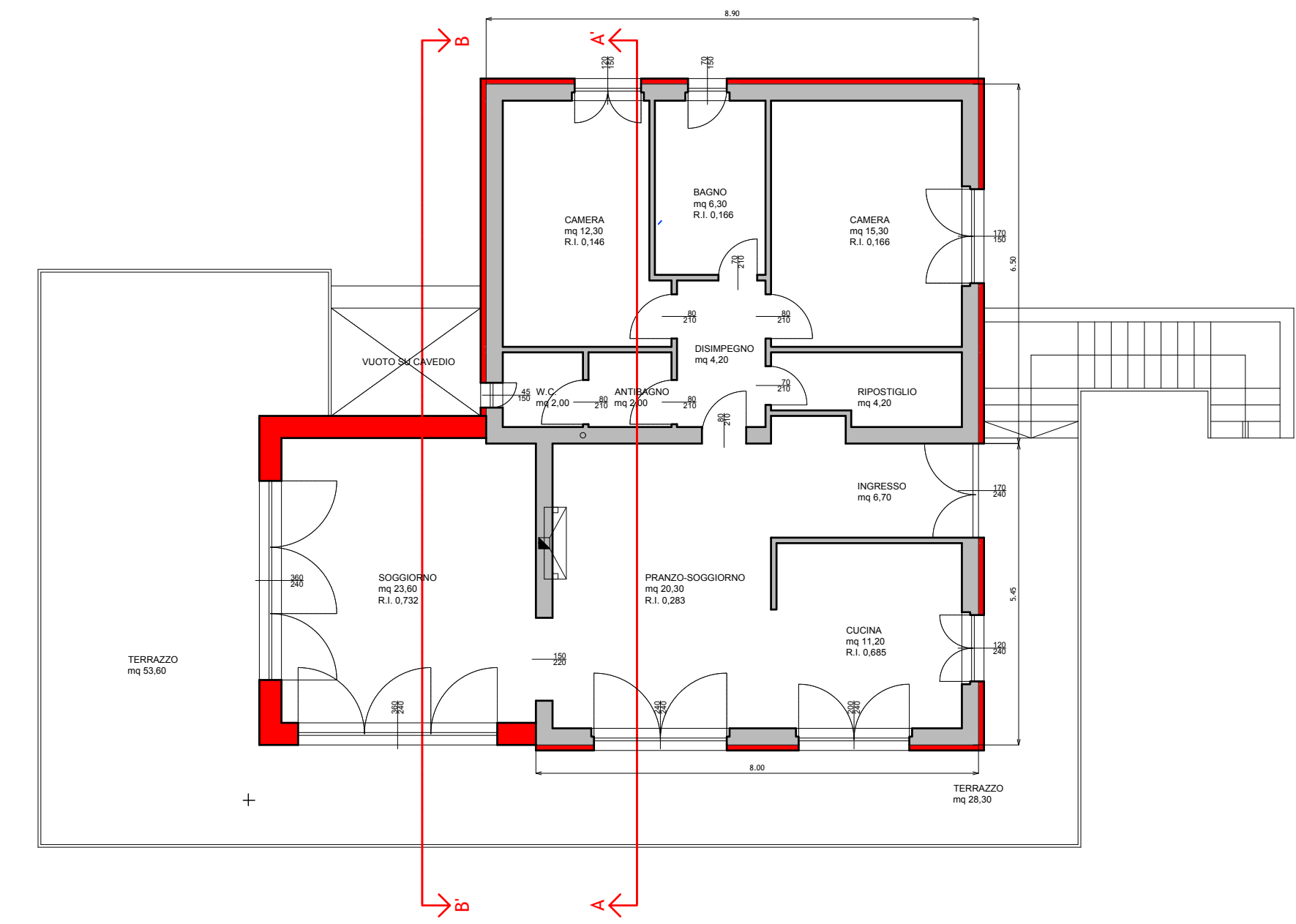
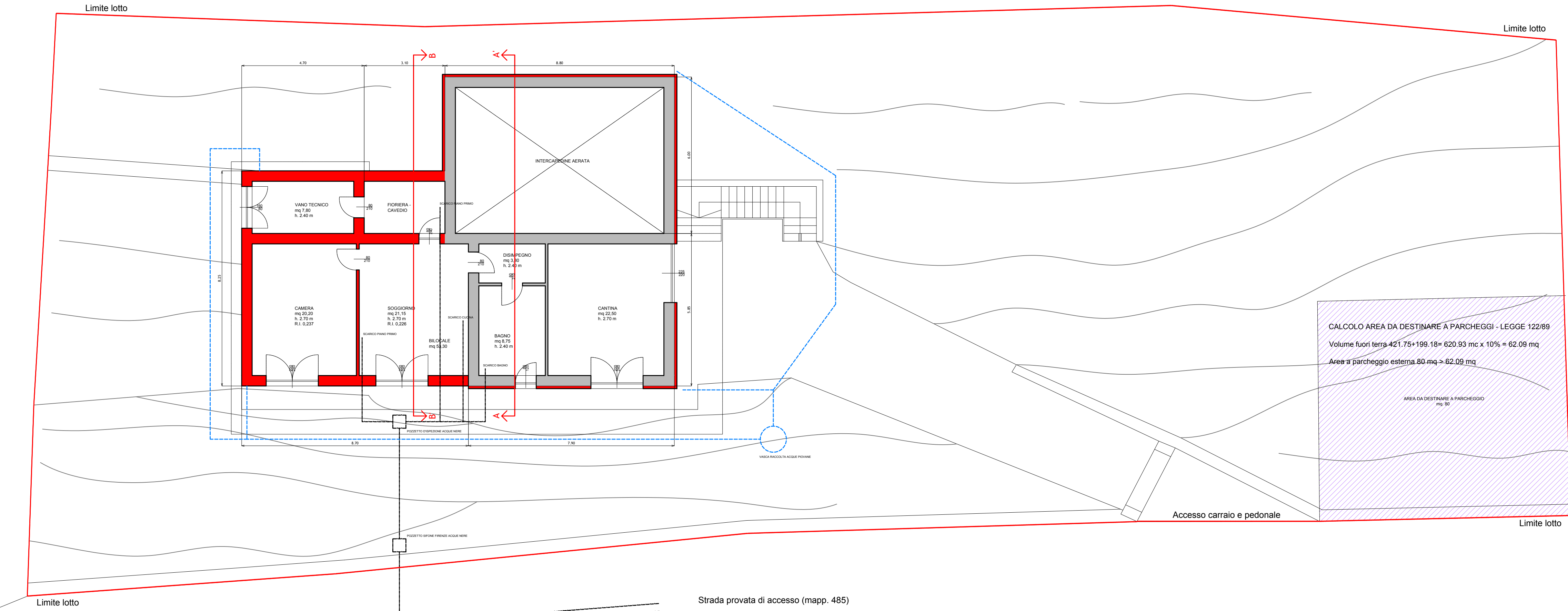


SEZIONE B'-B

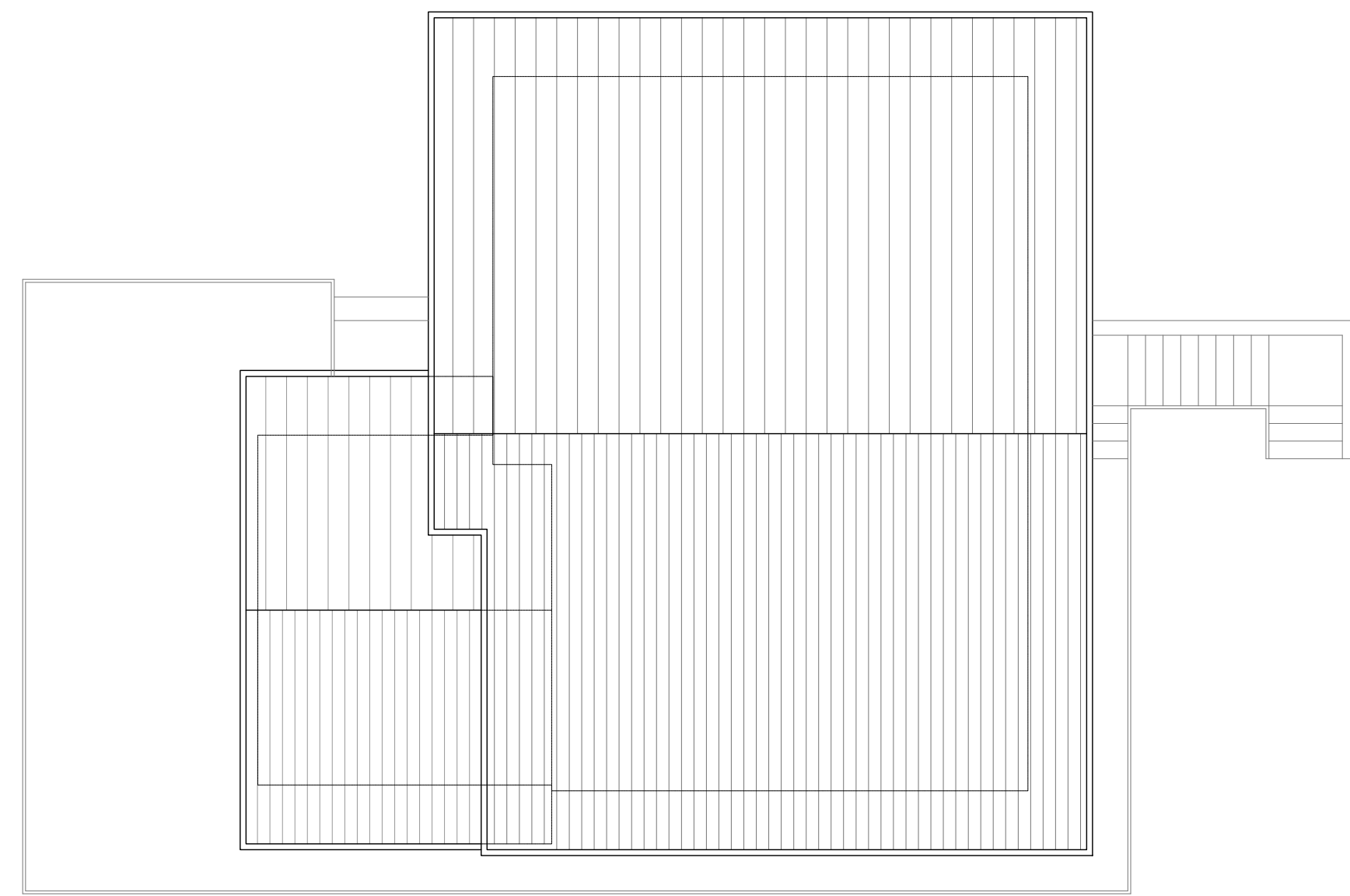


SEZIONE A'-A

PIANTA PIANO SEMINTERRATO



PIANTA PIANO TERRA



PIANTA DELLE COPERTURE